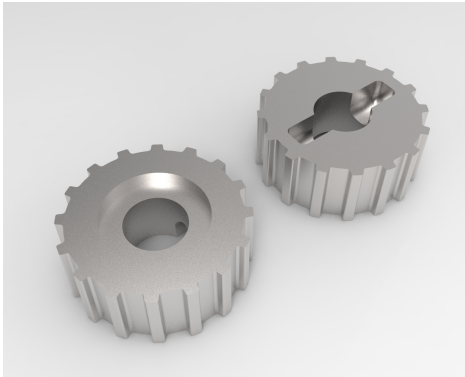




i3DGear Marine

Autohelm 4000 Pinion Sprocket Replacement



You've received a 3D printed Pinion Sprocket for your Autohelm 4000 Wheel Pilot. This part has been 3D printed in metal using a blend of 60% Stainless Steel and 40% Bronze making it virtually indestructible and much stronger than the original aluminum pinion.

To replace the pinion sprocket, follow these instructions.

Remove the 5 screws holding the metal Support Plate. Lift the Support Plate off.



Remove the belt from the pinion. Lift the old pinion off the motor shaft. If it is stuck, carefully put a screwdriver behind it and pry it off.

If you are replacing the pin, pull the old pin out, or tap lightly with a hammer, being careful not to bend the motor shaft. Insert the new pin.

Slide the new pinion sprocket over the pin/shaft. Replace the belt. Place the metal Support Plate over the assembly, being careful to align the eccentric cam shaft in the hole in the plate.

Replace the 5 screws. When inserting the screws back into the posts, be very careful to mate the screw into the same thread in the plastic. Turn back and forth until the screw enters the same thread and turns easily. Failure to do this, and trying to cut a new thread in the plastic with the screw will very often result in too much rotational force and will twist the post off.

Visit i3DGear.com to see our entire line of quality 3D printed Autohelm and Raymarine spare parts and our exclusive AutoBuddy wireless autopilot remote controls.

Rick.

r.wallace@i3DGear.com